



Czerpnia/wyrzutnia prostokątna stalowa ocynkowana

• Galvanized steel rectangular air intake/exhauster

CW



Stal ocynkowana, system profili stalowych • galvanized steel, steel shapes system.

Minimalna wysokość czerpni • min. height of the air intake: H = 200 mm.

Maks. wielkość czerpni • max. size of the air intake: B × H = 3000 mm × 2000 mm.

| H [mm] | Cena [PLN/szt.] • Price [PLN/pc] | | | | | | | | | |
|-----------|----------------------------------|----------|----------|----------|----------|----------|----------|----------|----------|----------|
| | B [mm] | | | | | | | | | |
| | 300 | 400 | 600 | 800 | 1000 | 1200 | 1400 | 1600 | 1800 | 2000 |
| 300 | 213,92 | 230,60 | 255,63 | 294,56 | 346,40 | 425,71 | 579,45 | 650,42 | 705,60 | 756,77 |
| 400 | 272,31 | 311,25 | 330,61 | 377,88 | 442,51 | 532,84 | 729,18 | 792,26 | 847,42 | 914,50 |
| 600 | 308,47 | 355,74 | 402,92 | 444,52 | 521,05 | 624,39 | 847,42 | 926,29 | 997,27 | 1 060,34 |
| 800 | 380,67 | 430,61 | 483,45 | 547,41 | 625,84 | 750,43 | 1 020,85 | 1 111,51 | 1 194,27 | 1 277,04 |
| 1000 | 483,22 | 544,41 | 605,37 | 686,91 | 742,31 | 892,37 | 1 202,28 | 1 296,72 | 1 379,60 | 1 482,05 |
| 1200 | 567,55 | 625,84 | 695,69 | 788,80 | 864,44 | 1 021,63 | 1 379,60 | 1 482,05 | 1 580,61 | 1 683,06 |
| 1400 | 890,81 | 981,47 | 1 091,83 | 1 221,98 | 1 340,22 | 1 458,46 | 1 572,71 | 1 687,07 | 1 801,31 | 1 915,66 |
| 1600 | 1 016,96 | 1 119,41 | 1 229,87 | 1 379,60 | 1 501,74 | 1 627,88 | 1 710,64 | 1 884,18 | 2 014,22 | 2 136,37 |
| 1800 | 1 154,90 | 1 269,25 | 1 387,50 | 1 592,41 | 1 687,07 | 1 825,01 | 1 970,84 | 2 100,88 | 2 246,71 | 2 392,55 |
| 2000 | 1 304,62 | 1 418,98 | 1 568,82 | 1 718,55 | 1 773,73 | 2 014,22 | 2 171,85 | 2 313,79 | 2 471,42 | 2 625,16 |

Czerpnia/wyrzutnia prostokątna aluminiowa

• Aluminium rectangular air intake/exhauster

CWA



Aluminium, system profili aluminiowych • aluminium, aluminium shapes system.

Minimalna wysokość czerpni • min. height of the air intake: H = 200 mm.

Maks. wielkość czerpni • max. size of the air intake: B × H = 3000 mm × 2000 mm.

| H [mm] | Cena [PLN/szt.] • Price [PLN/pc] | | | | | | | | | |
|-----------|----------------------------------|----------|----------|----------|----------|----------|----------|----------|----------|----------|
| | B [mm] | | | | | | | | | |
| | 300 | 400 | 600 | 800 | 1000 | 1200 | 1400 | 1600 | 1800 | 2000 |
| 300 | 398,29 | 429,36 | 475,85 | 548,39 | 615,55 | 698,36 | 760,38 | 853,59 | 926,00 | 993,29 |
| 400 | 506,92 | 579,33 | 615,55 | 703,50 | 786,32 | 874,27 | 957,07 | 1 039,77 | 1 112,18 | 1 200,15 |
| 600 | 574,20 | 662,16 | 750,10 | 827,66 | 926,00 | 1 024,24 | 1 112,18 | 1 215,68 | 1 308,78 | 1 391,58 |
| 800 | 708,75 | 801,85 | 900,07 | 1 019,10 | 1 112,18 | 1 231,21 | 1 339,84 | 1 458,85 | 1 567,48 | 1 676,11 |
| 1000 | 858,73 | 967,36 | 1 075,98 | 1 220,81 | 1 319,17 | 1 463,99 | 1 577,76 | 1 701,93 | 1 810,56 | 1 945,11 |
| 1200 | 1 008,70 | 1 112,18 | 1 236,35 | 1 401,86 | 1 536,42 | 1 676,11 | 1 810,56 | 1 945,11 | 2 074,40 | 2 208,96 |
| 1400 | 1 169,08 | 1 288,09 | 1 432,92 | 1 603,69 | 1 758,80 | 1 914,04 | 2 064,13 | 2 214,10 | 2 364,08 | 2 514,16 |
| 1600 | 1 334,71 | 1 469,13 | 1 613,97 | 1 810,56 | 1 970,91 | 2 136,43 | 2 245,17 | 2 472,70 | 2 643,46 | 2 803,84 |
| 1800 | 1 515,75 | 1 665,72 | 1 820,94 | 2 089,94 | 2 214,10 | 2 395,14 | 2 586,46 | 2 757,23 | 2 948,67 | 3 140,10 |
| 2000 | 1 712,21 | 1 862,29 | 2 058,88 | 2 255,45 | 2 327,86 | 2 643,46 | 2 850,33 | 3 036,61 | 3 243,48 | 3 445,32 |

Możliwość wykonania czerpni o wymiarach w zakresie H=200+2000 mm oraz B=200+3000 mm - cena na zapytanie.

• Possible manufacturing within range H=200+2000 mm and B=200+3000 mm - price on inquiry.



Wyrzutnia/czerpnia prostokątna dachowa

• Roof rectangular air exhauster/intake

WDP

Typ • Type A



Typ • Type B



| Wymiar • Dimensions A x B [mm] | Cena [PLN/szt.] • Price [PLN/pc] | |
|--------------------------------------|----------------------------------|--------------------|
| | Type A • Type A | Type B • Type B |
| 250×250 | 255,85 | 489,46 |
| 250×400 | 344,84 | 556,20 |
| 250×630 | 305,91 | 589,57 |
| 400×400 | 456,08 | 645,19 |
| 400×630 | 723,06 | 1 401,62 |

| Wymiar • Dimensions A x B [mm] | Cena [PLN/szt.] • Price [PLN/pc] | |
|--------------------------------------|----------------------------------|--------------------|
| | Type A • Type A | Type B • Type B |
| 630×630 | 934,42 | 1 690,85 |
| 630×1000 | 1 334,88 | 2 247,05 |
| 630×1600 | 1 980,07 | 2 981,23 |
| 1000×1000 | 2 213,68 | 3 181,46 |
| 1000×1600 | 2 781,00 | 4 438,48 |

Czerpnia dachowa okrągła • Round air intake

CDO



| øD [mm] | Cena [PLN/szt.] • Price [PLN/pc] |
|------------|-------------------------------------|
| 100 | 205,79 |
| 125 | 205,79 |
| 160 | 250,29 |
| 200 | 283,66 |
| 250 | 355,97 |

| øD [mm] | Cena [PLN/szt.] • Price [PLN/pc] |
|------------|-------------------------------------|
| 315 | 467,21 |
| 400 | 734,18 |
| 500 | 945,54 |
| 630 | 1 357,13 |

Wyrzutnia dachowa okrągła • Round air exhauster

WDO-C



| øD [mm] | Cena [PLN/szt.] • Price [PLN/pc] |
|------------|-------------------------------------|
| 100 | 155,74 |
| 125 | 155,74 |
| 160 | 200,23 |
| 200 | 200,23 |
| 250 | 255,85 |

| øD [mm] | Cena [PLN/szt.] • Price [PLN/pc] |
|------------|-------------------------------------|
| 315 | 367,09 |
| 400 | 556,20 |
| 500 | 756,43 |
| 630 | 1 212,52 |

Wyrzutnia z kołnierzem VKPK • Air exhauster with VKPK flange

HF



| øD [mm] | Cena [PLN/szt.] • Price [PLN/pc] |
|------------|-------------------------------------|
| 100 | 278,10 |
| 125 | 289,22 |
| 160 | 311,47 |
| 200 | 367,09 |
| 250 | 500,58 |

| øD [mm] | Cena [PLN/szt.] • Price [PLN/pc] |
|------------|-------------------------------------|
| 315 | 767,56 |
| 400 | 1 090,15 |
| 500 | 1 334,88 |
| 630 | 1 902,20 |
| 800 | 2 781,00 |

OSPRZĘT WENTYLACYJNY

Czerpnie/wyrzutnie, wywietrzaki cylindryczne

• Air intakes/exhausters, round gravity ventilators



Wyrzutnia z odejściem na rurę • Air exhauster to fit round duct

HN



| øD [mm] | Cena [PLN/szt.] • Price [PLN/pc] |
|------------|-------------------------------------|
| 100 | 278,10 |
| 125 | 289,22 |
| 160 | 311,47 |
| 200 | 367,09 |
| 250 | 500,58 |

| øD [mm] | Cena [PLN/szt.] • Price [PLN/pc] |
|------------|-------------------------------------|
| 315 | 767,56 |
| 400 | 1 090,15 |
| 500 | 1 334,88 |
| 630 | 1 902,20 |
| 800 | 2 781,00 |

Czerpnia dachowa • Roof air intake

K



| ød [mm] | øD [mm] | Cena [PLN/szt.] • Price [PLN/pc] |
|------------|------------|-------------------------------------|
| 100 | 200 | 200,23 |
| 125 | 225 | 200,23 |
| 150 | 250 | 233,60 |
| 160 | 260 | 233,60 |
| 180 | 285 | 244,73 |
| 200 | 315 | 244,73 |

| ød [mm] | øD [mm] | Cena [PLN/szt.] • Price [PLN/pc] |
|------------|------------|-------------------------------------|
| 250 | 400 | 333,72 |
| 315 | 500 | 400,46 |
| 355 | 550 | 489,46 |
| 400 | 600 | 533,95 |
| 450 | 650 | 622,94 |
| 500 | 700 | 711,94 |

Ośłona dachowa • Ventilation cap

KV



≤ ø200



> ø200

| ød [mm] | Cena [PLN/szt.] • Price [PLN/pc] |
|------------|-------------------------------------|
| 100 | 49,62 |
| 125 | 62,52 |
| 150 | 65,40 |
| 160 | 67,31 |
| 180 | 73,31 |
| 200 | 81,77 |
| 250 | 106,35 |

| ød [mm] | Cena [PLN/szt.] • Price [PLN/pc] |
|------------|-------------------------------------|
| 315 | 164,64 |
| 355 | 199,68 |
| 400 | 234,27 |
| 450 | 276,44 |
| 500 | 347,63 |
| 630 | 453,08 |

Wywietrzak cylindryczny • Round gravity ventilator

WDC



| øD [mm] | Cena [PLN/szt.] • Price [PLN/pc] |
|------------|-------------------------------------|
| 100 | 205,79 |
| 125 | 205,79 |
| 160 | 222,48 |
| 200 | 322,60 |
| 250 | 378,22 |

| øD [mm] | Cena [PLN/szt.] • Price [PLN/pc] |
|------------|-------------------------------------|
| 315 | 545,08 |
| 400 | 723,06 |
| 500 | 1 201,39 |
| 630 | 1 468,37 |



Czerpnia/wyrzutnia okrągła, stal chromo-niklowa

• Round air intakes/exhausters, chrome-nickel plated

VLA



| Typ - Type | øA [mm] | øB [mm] | C [mm] | Cena [PLN/szt.] • Price [PLN/pc] |
|----------------|---------|---------|--------|-------------------------------------|
| VLA-100 | 97 | 133 | 52 | 137,71 |
| VLA-125 | 120 | 165 | 52 | 183,10 |
| VLA-150 | 145 | 192 | 62 | 219,37 |
| VLA-160 | 155 | 192 | 62 | 227,26 |
| VLA-200 | 195 | 253 | 62 | 418,37 |

Czerpnia/wyrzutnia okrągła, aluminium

• Round air intakes/exhausters, aluminium

KWO-AL



| Typ - Type | ød [mm] | øD [mm] | H [mm] | Cena [PLN/szt.] • Price [PLN/pc] |
|-------------------|---------|---------|--------|-------------------------------------|
| KWO-AL 100 | 100 | 125 | 20 | 50,84 |
| KWO-AL 125 | 125 | 150 | 20 | 57,84 |
| KWO-AL 160 | 160 | 185 | 20 | 69,41 |
| KWO-AL 200 | 200 | 225 | 20 | 76,31 |
| KWO-AL 250 | 250 | 275 | 20 | 184,89 |
| KWO-AL 315 | 315 | 350 | 20 | 242,73 |
| KWO-AL 400 | 400 | 435 | 35 | 459,86 |

Czerpnia/wyrzutnia ścienna aluminiowa

• Round air intakes/exhausters, aluminium

ELB

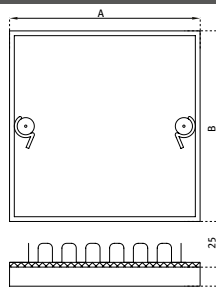


| øD [mm] | Cena [PLN/szt.] • Price [PLN/pc] |
|------------|-------------------------------------|
| 100 | 71,64 |
| 125 | 80,20 |
| 150 | 97,66 |
| 160 | 104,57 |
| 200 | 162,41 |
| 250 | 247,62 |
| 315 | 344,29 |



Drzwi rewizyjne - Access doors

RD



Drzwi rewizyjne na kanał prostokątny, wykonane z blachy stalowej ocynkowanej. W skład zestawu wchodzi izolowane drzwi o grubości 25 mm wraz z zamkami i ramka przystosowana do montażu na kanale. Ramka dostarczana jest z uszczelkami.

Access door for a rectangular duct. Made of galvanized steel. The set includes insulated doors with a thickness of 25 mm with locks and frame suitable for mounting in the duct. The frame is insulated with gasket.

| Typ · Type | Wymiar A × B · Nominal size [mm] | Wymiar otworu montażowego · Duct opening size [mm] | Cena [PLN/szt.] · Price [PLN/pc] |
|---------------|--|--|-------------------------------------|
| RD 15 | 150 × 150 | 120 × 120 | 64,79 |
| RD 20 | 200 × 200 | 170 × 170 | 73,44 |
| RD 21 | 200 × 125 | 170 × 95 | 73,95 |
| RD 25 | 250 × 250 | 220 × 220 | 92,80 |
| RD 30 | 300 × 300 | 270 × 270 | 109,70 |
| RD 31 | 300 × 150 | 270 × 120 | 83,12 |
| RD 32 | 300 × 200 | 270 × 170 | 92,08 |
| RD 35 | 350 × 350 | 320 × 320 | 133,18 |
| RD 40 | 400 × 400 | 370 × 370 | 153,47 |
| RD 42 | 400 × 200 | 370 × 170 | 117,01 |
| RD 425 | 400 × 250 | 370 × 220 | 121,85 |
| RD 43 | 450 × 300 | 420 × 270 | 145,64 |
| RD 44 | 400 × 300 | 370 × 270 | 136,78 |
| RD 45 | 450 × 450 | 420 × 420 | 202,50 |
| RD 50 | 500 × 500 | 470 × 470 | 232,88 |
| RD 63 | 600 × 300 | 570 × 270 | 193,95 |
| RD 64 | 600 × 400 | 570 × 370 | 229,18 |
| RD 65 | 600 × 450 | 570 × 420 | 248,75 |
| RD 66 | 600 × 600 | 570 × 570 | 298,80 |



Klapa rewizyjna na kanał okrągły • Curved access door for round duct

KR



| A × B [mm] | Średnica rury • Pipe diameter [mm] | Cena [PLN/szt.] • Price [PLN/pc] |
|------------------|------------------------------------|----------------------------------|
| 180 × 80 | Ø100 ÷ Ø125 | 54,06 |
| 250 × 150 | Ø160 ÷ Ø400 | 89,22 |
| 400 × 300 | Ø400 ÷ Ø800 | 180,77 |

Klapa rewizyjna na kanał prostokątny • Flat access door for rectangular duct

FAD



| A × B [mm] | Cena [PLN/szt.] • Price [PLN/pc] |
|------------------|----------------------------------|
| 180 × 180 | 31,71 |
| 200 × 100 | 47,39 |
| 250 × 150 | 67,96 |
| 300 × 200 | 142,50 |
| 400 × 300 | 253,29 |
| 500 × 400 | 453,97 |
| 600 × 450 | 545,75 |

Nasada kominowa (nierdzewna) • Chimney root (stainless steel)

ROTOFLEX



| øD [mm] | nyplowa dzielona • split with coupling | | z kołnierzem • with flange | | z podstawą • with base | |
|------------|---|---------|-------------------------------|---------|---------------------------|---------|
| | „pletwa” | „kogut” | „pletwa” | „kogut” | „pletwa” | „kogut” |
| | Cena [PLN/szt.] • Price [PLN/pc] | | | | | |
| 130 | 396,47 | 396,47 | 396,47 | 396,47 | 396,47 | 396,47 |
| 150 | 425,41 | 425,41 | 425,41 | 425,41 | 425,41 | 425,41 |
| 180 | 460,51 | 460,51 | 460,51 | 460,51 | 460,51 | 460,51 |
| 200 | 484,38 | 484,38 | 484,38 | 484,38 | 484,38 | 484,38 |
| 250 | 520,13 | 520,13 | 520,13 | 520,13 | 520,13 | 520,13 |
| 300 | 599,51 | 599,51 | 599,51 | 599,51 | 599,51 | 599,51 |
| 350 | 757,40 | 757,40 | 757,40 | 757,40 | 757,40 | 757,40 |



Nasada kominowa • Chimney root

CENTROWENT



| øD [mm] | nyplowa • coupling | | nyplowa dzielona • split with coupling | | z kołnierzem • with flange | | z podstawą • with base | |
|------------|----------------------------------|------------------|---|------------------|-------------------------------|------------------|---------------------------|------------------|
| | CA ¹⁾ | CN ¹⁾ | CA ¹⁾ | CN ¹⁾ | CA ¹⁾ | CN ¹⁾ | CA ¹⁾ | CN ¹⁾ |
| | Cena [PLN/szt.] • Price [PLN/pc] | | | | | | | |
| 130 | 249,91 | 348,95 | 306,72 | 379,30 | 340,74 | 414,72 | 339,55 | 442,26 |
| 150 | 258,44 | 367,20 | 316,98 | 398,95 | 356,40 | 446,90 | 348,30 | 466,34 |
| 160 | 260,39 | 392,58 | 347,33 | 436,21 | 365,58 | 458,35 | 352,19 | 474,12 |
| 200 | 301,21 | 470,12 | 383,62 | 481,25 | 386,86 | 526,07 | 373,79 | 559,98 |
| 250 | 417,53 | 634,50 | 521,42 | 601,13 | 490,75 | 707,51 | 477,25 | 708,48 |
| 300 | 571,43 | 669,49 | 597,24 | 763,34 | 587,09 | 810,11 | 517,86 | 860,54 |
| 315 | 466,24 | 726,41 | 625,10 | × | 605,45 | × | 569,81 | × |
| 400 | 779,22 | × | 841,64 | × | 824,26 | × | 800,17 | × |
| 450 | 866,16 | × | 941,65 | × | 917,46 | × | 886,46 | × |
| 500 | 909,58 | × | 982,48 | × | 1 038,96 | × | 1 000,40 | × |

¹⁾ CA - Aluminium CN - Stal nierdzewna • Stainless steel

Kominek • Ventilation caps

VH



| ød [mm] | Cena [PLN/szt.] • Price [PLN/pc] |
|------------|-------------------------------------|
| 100 | 77,87 |
| 125 | 82,32 |
| 140 | 85,65 |
| 150 | 93,44 |
| 160 | 96,78 |
| 180 | 106,79 |
| 200 | 121,25 |
| 225 | 127,93 |
| 250 | 133,49 |
| 280 | 155,74 |
| 300 | 200,23 |

| ød [mm] | Cena [PLN/szt.] • Price [PLN/pc] |
|------------|-------------------------------------|
| 315 | 200,23 |
| 355 | 255,85 |
| 400 | 311,47 |
| 450 | 389,34 |
| 500 | 556,20 |
| 560 | 745,31 |
| 600 | 1 023,41 |
| 630 | 1 101,28 |
| 710 | 1 390,50 |
| 800 | 1 891,08 |



NOWOŚĆ - NEW

Kominek - Ventilation caps

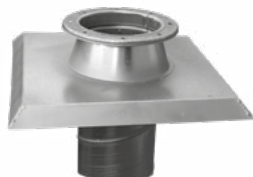
VH-S



| øD [mm] | Ilość [szt./opak.] • Quantity [pcs/pack.] | Cena [PLN/szt.] • Price [PLN/pc] |
|------------|--|-------------------------------------|
| 100 | 20 | 61,00 |
| 125 | 20 | 64,00 |
| 150 | | 73,00 |
| 160 | 24 | 75,00 |
| 200 | 24 | 95,00 |
| 250 | 16 | 104,00 |
| 315 | 6 | 156,00 |

Podstawa dachowa - Roof base

PD-B



| øD [mm] | Cena [PLN/szt.] • Price [PLN/pc] | | |
|------------|----------------------------------|----------|----------|
| | B I | B II | B III |
| 100 | 177,98 | 211,36 | 333,72 |
| 125 | 177,98 | 211,36 | 333,72 |
| 160 | 211,36 | 250,29 | 378,22 |
| 200 | 222,48 | 300,35 | 444,96 |
| 250 | 244,73 | 339,28 | 522,83 |
| 315 | 266,98 | 361,53 | 667,44 |
| 400 | 322,60 | 511,70 | 878,80 |
| 500 | 500,58 | 778,68 | 1 168,02 |
| 630 | 656,32 | 1 023,41 | 1 546,24 |

Podstawa dachowa prostokątna - Rectangular roof base

PD-P



| Wymiar - Size A x B [mm] | Cena [PLN/szt.] • Price [PLN/pc] |
|-----------------------------|-------------------------------------|
| 250 × 250 | 422,71 |
| 250 × 400 | 500,58 |
| 250 × 630 | 600,70 |
| 400 × 400 | 756,43 |
| 400 × 630 | 878,80 |
| 630 × 630 | 1 090,15 |
| 630 × 1000 | 1 446,12 |
| 630 × 1600 | 1 902,20 |
| 1000 × 1000 | 2 024,57 |


Podstawa dachowa prostokątna • Rectangular roof base
PD-S

Produkt przystosowany do montażu następujących typów wentylatorów:

Systemair: DVS, DHS, DVSI, DVN, DVNI, DVC;

Rosenberg: DV, DH, DVS, DVWN, DVWNS, DV-G.

Wykonanie z blachy ocynkowanej zapewnia odporność na korozję.

The bases are adapted to assembly of the following ventilators:

Systemair: DVS, DHS, DVSI, DVN, DVNI, DVC;

Rosenberg: DV, DH, DVS, DVWN, DVWNS, DV-G.

It is made of the zinc coated sheet that makes anticorrosive protection.



| Typ • Type | Cena [PLN/szt.] • Price [PLN/pc] |
|------------------|-------------------------------------|
| PD-S 190/225 | 622,94 |
| PD-S 310/311 | 700,81 |
| PD-S 355/400 | 834,30 |
| PD-S 450/499/500 | 889,92 |
| PD-S 560/630 | 1 245,89 |
| PD-S 710 | 1 523,99 |
| PD-S 800/900 | 1 868,83 |

Podstawa dachowa prostokątna tłumiąca • Rectangular muffler roof base
PD-ST

Do zastosowań o podwyższonych wymaganiach odnośnie parametrów akustycznych.

Tłumienie dźwięku przy 250Hz wynosi średnio 8 dB.

Materiał pochłaniający dźwięk jest odporny na ścieranie do prędkości 20 m/s.

Przystosowany do montażu następujących typów wentylatorów:

Systemair: DVS, DHS, DVSI, DVN, DVNI, DVC;

Rosenberg: DV, DH, DVS, DVWN, DVWNS, DV-G.

Attenuating roof base for roof ventilators is to be used in case of higher acoustic requirements.

Sound attenuation with frequency of 250 Hz is 8 dB on the average.

The sound attenuating material is resistant to wear up to 20 m/sec.

The bases are adapted to operate with the following ventilators:

Systemair: DVS, DHS, DVSI, DVN, DVNI, DVC;

Rosenberg: DV, DH, DVS, DVWN, DVWNS, DV-G



| Typ • Type | Cena [PLN/szt.] • Price [PLN/pc] |
|-------------------|-------------------------------------|
| PD-ST 190/225 | 1 168,02 |
| PD-ST 310/311 | 1 390,50 |
| PD-ST 355/400 | 1 768,72 |
| PD-ST 450/499/500 | 1 891,08 |
| PD-ST 560/630 | 2 725,38 |
| PD-ST 710 | 3 392,82 |
| PD-ST 800/900 | 4 282,74 |



Filtr kanałowy okrągły EU4 - Round duct filter EU4

OFK



| øD [mm] | Cena [PLN/szt.] - Price [PLN/pc] |
|------------|----------------------------------|
| 100 | 266,98 |
| 125 | 266,98 |
| 160 | 355,97 |
| 200 | 378,22 |
| 250 | 400,46 |
| 315 | 433,84 |
| 355 | 478,33 |
| 400 | 545,08 |

Filtr kanałowy okrągły EU4 - Round duct filter EU4

FKO



| øD [mm] | A [mm] | B [mm] | Cena [PLN/szt.] - Price [PLN/pc] |
|------------|--------|--------|----------------------------------|
| 100 | 180 | 180 | 266,98 |
| 125 | 180 | 180 | 266,98 |
| 160 | 210 | 180 | 355,97 |
| 200 | 250 | 180 | 378,22 |
| 250 | 300 | 180 | 400,46 |
| 315 | 370 | 180 | 433,84 |
| 355 | 400 | 180 | 478,33 |
| 400 | 450 | 180 | 545,08 |

Filtr kanałowy szufladowy EU4 - Cassette duct filter EU4

FS



| B [mm] | 200 | 400 | 600 | 800 | 1000 | 1250 |
|-------------|----------------------------------|------------|------------|------------|-------------|-------------|
| H [mm] | Cena [PLN/szt.] - Price [PLN/pc] | | | | | |
| 200 | 414,37 | 414,37 | 512,92 | 574,44 | 615,49 | 677,01 |
| 400 | 414,37 | 414,37 | 512,92 | 615,49 | 656,42 | 861,67 |
| 600 | 512,92 | 512,92 | 594,91 | 738,53 | 882,13 | 1 148,88 |
| 800 | 574,44 | 615,49 | 718,06 | 943,65 | 1 230,88 | 1 436,11 |
| 1000 | 615,49 | 656,42 | 841,08 | 1 210,40 | 1 251,45 | 1 743,80 |
| 1250 | 677,01 | 861,67 | 1 087,26 | 1 395,06 | 1 743,80 | 2 133,58 |

Możliwość wykonania filtrów kanałowych o indywidualnych wymiarach w zakresie H = 200 + 1250 mm oraz B = 200 + 1250 mm - cena na zapytanie ofertowe. • Possible manufacturing within range H = 200 + 1250 mm and B = 200 + 1250 mm - price on inquiry.



Kratka typ AI z siatki stalowej ocynkowanej z ramką płaską

• Grille made of galvanized steel mesh with the flat frame

KSS



Siatka stalowa ocynkowana, wielkość oczek 12 x 12 mm.
Cena obejmuje wyłącznie kratkę bez kanału przyłączeniowego.

Pulled steel wire mesh, openings 12 x 12 mm.

Price comprises the grille only, without connecting duct.

| H [mm] | Cena [PLN/szt.] • Price [PLN/pc] | | | | | | | | | |
|-------------|----------------------------------|--------|--------|--------|--------|--------|--------|--------|--------|----------|
| | B [mm] | | | | | | | | | |
| | 300 | 400 | 600 | 800 | 1000 | 1200 | 1400 | 1600 | 1800 | 2000 |
| 300 | 112,46 | 116,69 | 125,47 | 160,96 | 168,75 | 183,77 | 218,26 | 233,05 | 277,99 | 300,35 |
| 400 | 118,92 | 123,37 | 155,74 | 166,19 | 171,31 | 192,00 | 230,04 | 238,83 | 287,67 | 306,69 |
| 600 | 125,47 | 155,74 | 166,19 | 171,31 | 176,54 | 200,12 | 241,83 | 259,63 | 303,58 | 345,18 |
| 800 | 160,96 | 166,19 | 171,31 | 176,54 | 189,44 | 210,81 | 277,21 | 315,59 | 380,21 | 431,38 |
| 1000 | 168,75 | 171,31 | 176,54 | 189,44 | 205,12 | 256,86 | 330,38 | 383,55 | 485,78 | 524,05 |
| 1200 | 176,54 | 184,32 | 192,11 | 202,35 | 249,18 | 310,92 | 407,03 | 463,09 | 562,43 | 629,51 |
| 1400 | 209,57 | 218,03 | 232,26 | 266,20 | 317,03 | 409,92 | 468,99 | 542,74 | 658,31 | 734,96 |
| 1600 | 243,62 | 249,74 | 271,43 | 329,94 | 400,91 | 481,12 | 567,32 | 628,95 | 775,01 | 865,22 |
| 1800 | 290,67 | 304,02 | 320,60 | 397,57 | 501,14 | 588,02 | 688,24 | 771,67 | 865,22 | 965,46 |
| 2000 | 313,92 | 320,60 | 360,86 | 454,42 | 551,31 | 658,10 | 768,33 | 865,22 | 965,46 | 1 065,68 |

Możliwość wykonania o indywidualnych wymiarach w zakresie H=300+1500 mm oraz B=300+1500 mm - cena na zapytanie.

• Possible manufacturing within range H=300+1500 mm oraz B=300+1500 mm - price on inquiry.



Króciec elastyczny okrągły bez kołnierzy

• Circular flexible connector pipe without flange

KEO



| øD [mm] | Cena [PLN/szt.] • Price [PLN/pc] |
|------------|-------------------------------------|
| 80 | 26,70 |
| 100 | 28,92 |
| 125 | 31,15 |
| 160 | 33,37 |
| 200 | 36,71 |
| 250 | 40,05 |

| øD [mm] | Cena [PLN/szt.] • Price [PLN/pc] |
|-------------|-------------------------------------|
| 315 | 44,50 |
| 400 | 51,17 |
| 500 | 58,96 |
| 630 | 74,53 |
| 800 | 87,88 |
| 1000 | 110,13 |

Króciec elastyczny okrągły z kołnierzami

• Circular flexible connector pipe with flange

KEO-K



| øD [mm] | Cena [PLN/szt.] • Price [PLN/pc] |
|------------|-------------------------------------|
| 80 | 76,76 |
| 100 | 83,43 |
| 125 | 88,99 |
| 160 | 95,67 |
| 200 | 109,02 |
| 250 | 133,49 |

| øD [mm] | Cena [PLN/szt.] • Price [PLN/pc] |
|-------------|-------------------------------------|
| 315 | 156,85 |
| 400 | 192,45 |
| 500 | 255,85 |
| 630 | 422,71 |
| 1000 | 660,77 |

Króciec elastyczny prostokątny • Rectangular flexible duct connector

KEP



| B [mm] | 200 | 400 | 600 | 800 | 1000 | 1250 |
|-------------|----------------------------------|------------|------------|------------|-------------|-------------|
| A [mm] | Cena [PLN/szt.] • Price [PLN/pc] | | | | | |
| 200 | 85,21 | 116,36 | 145,95 | 181,09 | 216,37 | 264,86 |
| 400 | 116,36 | 153,28 | 181,09 | 216,37 | 248,51 | 302,80 |
| 600 | 153,28 | 190,11 | 216,37 | 248,51 | 283,77 | 340,62 |
| 800 | 181,09 | 216,37 | 248,51 | 294,68 | 329,71 | 375,66 |
| 1000 | 216,37 | 248,51 | 283,77 | 329,71 | 367,53 | 421,60 |
| 1250 | 264,86 | 291,89 | 340,62 | 375,66 | 421,60 | 473,00 |